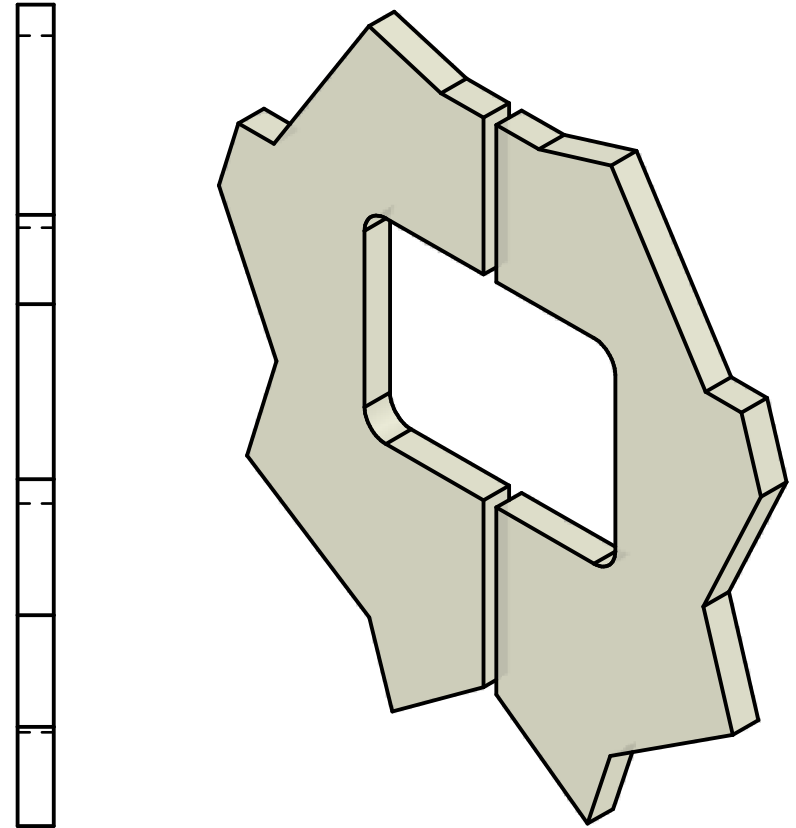
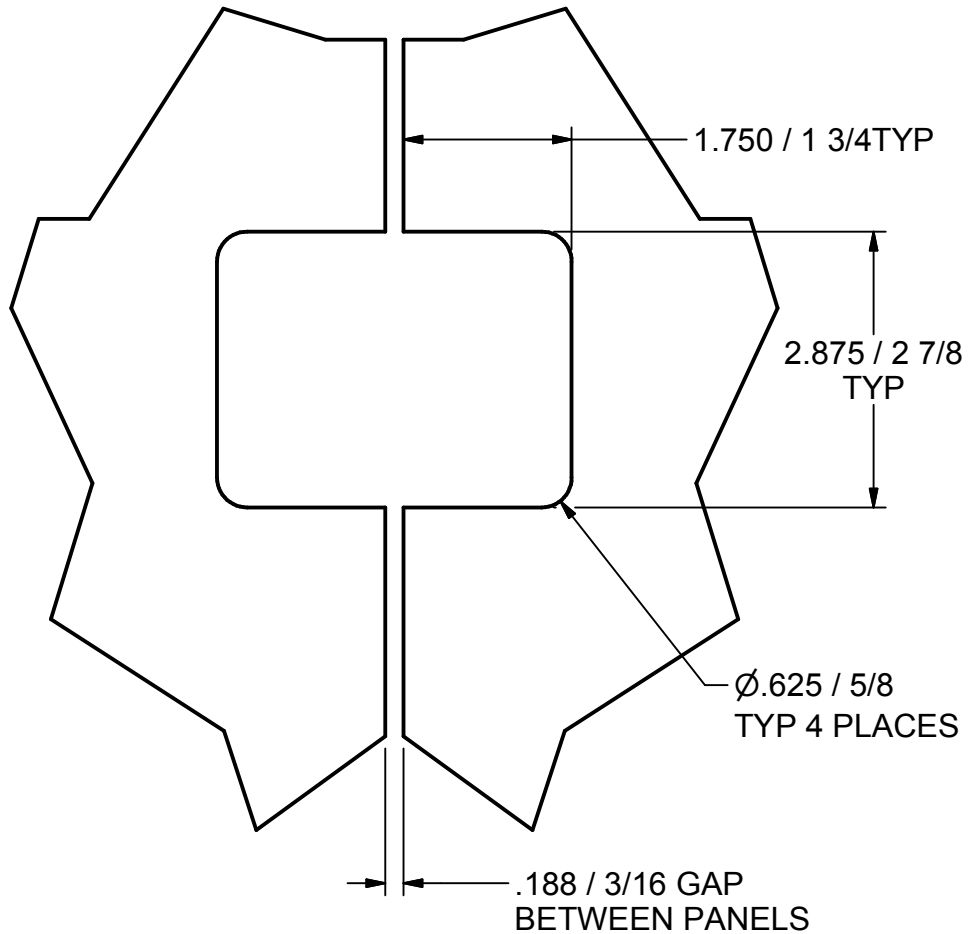


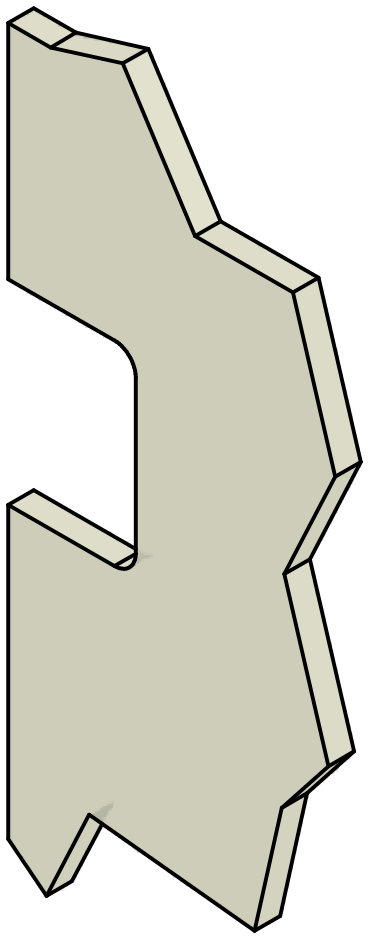
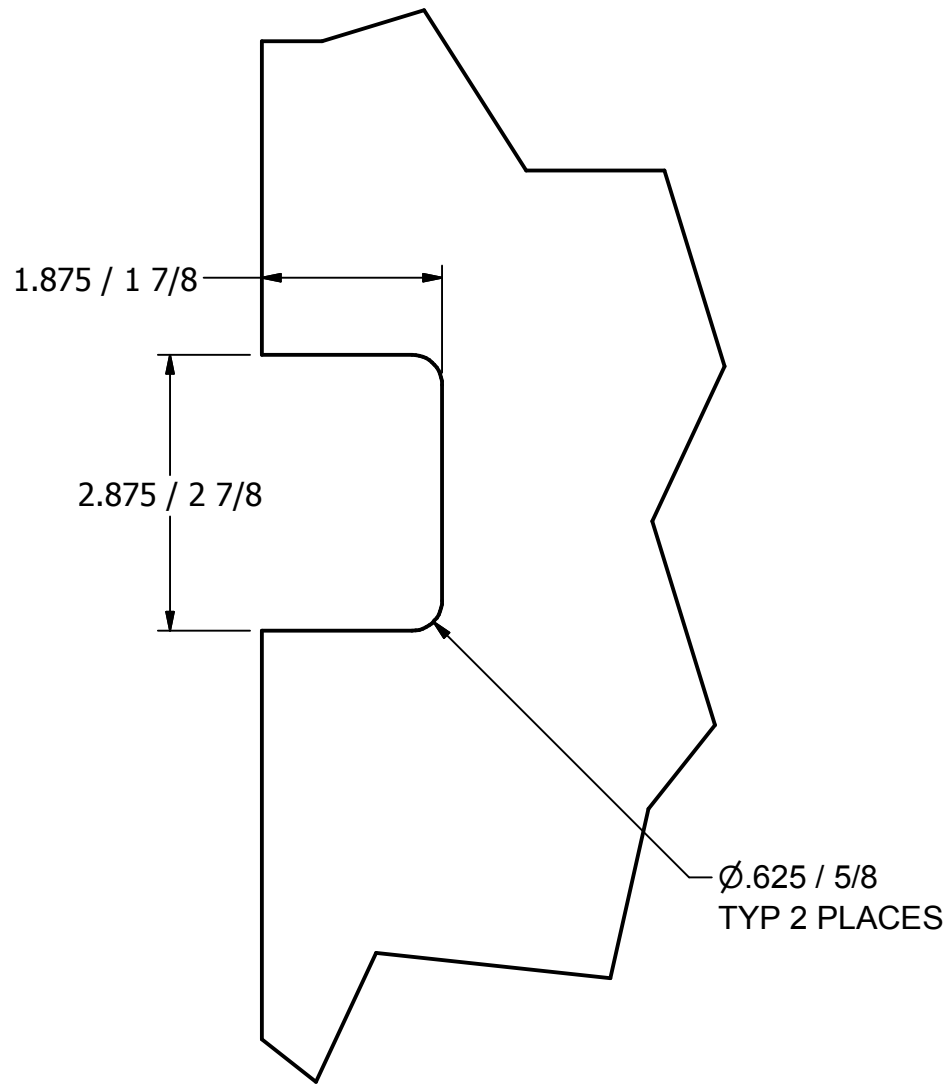
NOTE:  
THIS NOTCH IS ALSO USED FOR:  
GWHB-202  
GWOH-200  
MSDT-200  
RGWH-300

Drawing Design And Other Disclosures Are The Property Of C.H.M.I. Unauthorized Use Manufacture Or Reproduction In Whole Or Part Is Prohibited	SHEET SIZE	A		CHMI Custom Hardware Manufacturing, Inc. Keokuk, IA 52632	
	<b>GWH200 GLASS NOTCH</b>				
DECIMAL .XXX ± .002 .XX ± .005 .X ± .01	DESCRIPTION (GLASS TO WALL HINGE) (TYPICAL NOTCH FOR EACH HINGE)				
FRACTIONAL ± 1/64	MATERIAL	DATE 7/18/2006	DRAWN CHMI		
ANGULAR ± 1°	SCALE	SHEET 1 OF 4	PART # GWH200 Notch		



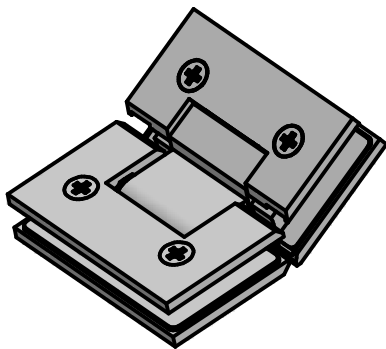
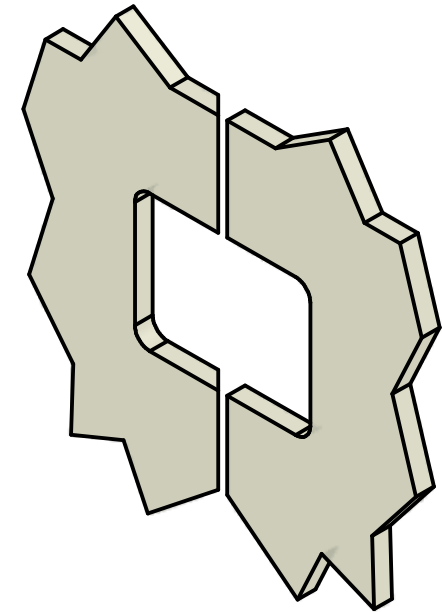
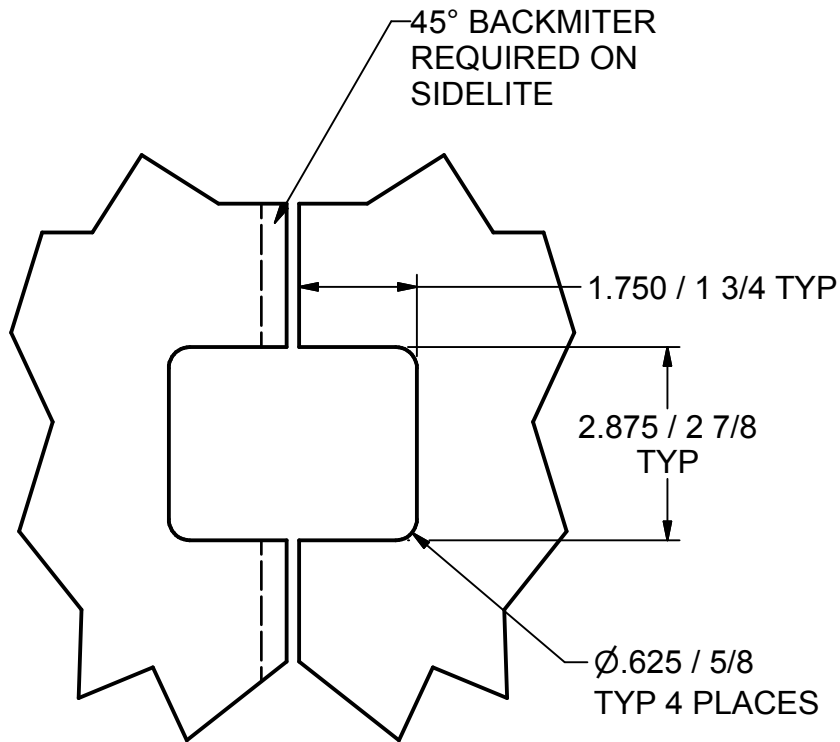
NOTE:  
THIS NOTCH IS ALSO USED FOR:  
RGGH-300

Drawing Design And Other Disclosures Are The Property Of C.H.M.I. Unauthorized Use Manufacture Or Reproduction In Whole Or Part Is Prohibited	SHEET SIZE	A		CHMI Custom Hardware Manufacturing, Inc. Keokuk, IA 52632	
	<b>GGH200 GLASS NOTCH</b>				
DECIMAL .XXX ± .002 .XX ± .005 .X ± .01	DESCRIPTION (GLASS TO GLASS HINGE) (TYPICAL NOTCH FOR EACH HINGE)				
FRACTIONAL ± 1/64	MATERIAL	DATE 7/18/2006	DRAWN CHMI		
ANGULAR ± 1'	SCALE	SHEET 2 OF 4	PART # GGH200 Notch		



NOTE:  
THIS NOTCH IS ALSO USED FOR:  
GWH-201

Drawing Design And Other Disclosures Are The Property Of C.H.M.I. Unauthorized Use Manufacture Or Reproduction In Whole Or Part Is Prohibited	SHEET SIZE	<b>CHMI</b> Custom Hardware Manufacturing, Inc. Keokuk, IA 52632		
	A	<b>QWTH203 GLASS NOTCH</b>		
DECIMAL .XXX ± .002 .XX ± .005 X ± .01	DESCRIPTION (GLASS TO WALL HINGE WITH JAMB) (TYPICAL NOTCH FOR EACH HINGE)			
FRACTIONAL ± 1/64	MATERIAL	DATE	DRAWN	
		7/18/2006	CHMI	
ANGULAR	SCALE	SHEET	PART #	
± 1'		3 OF 4	QWTH203 Notch	



STANDARD GAP = 3/16"

Drawing Design And Other Disclosures Are The Property Of C.H.M.I. Unauthorized Use Manufacture Or Reproduction In Whole Or Part Is Prohibited	SHEET SIZE <b>A</b>	<b>CHMI</b> Custom Hardware Manufacturing, Inc. Keokuk, IA 52632	
	<b>GGHNO-135 GLASS NOTCH</b>		
DECIMAL .XXX ± .002 .XX ± .005 .X ± .01	DESCRIPTION (GLASS TO GLASS NEO ANGLE- 135° HINGE) (TYPICAL NOTCH FOR EACH HINGE)		
FRACTIONAL ± 1/64	MATERIAL	DATE 7/18/2006	DRAWN CHMI
ANGULAR ± 1'	SCALE	SHEET 4 OF 4	PART # GGHNO135 Notch