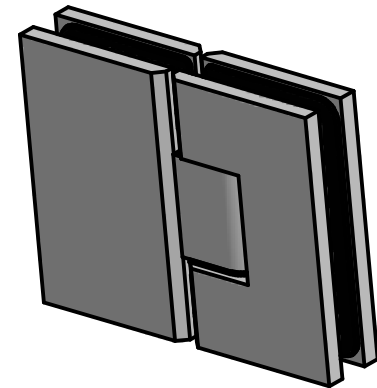
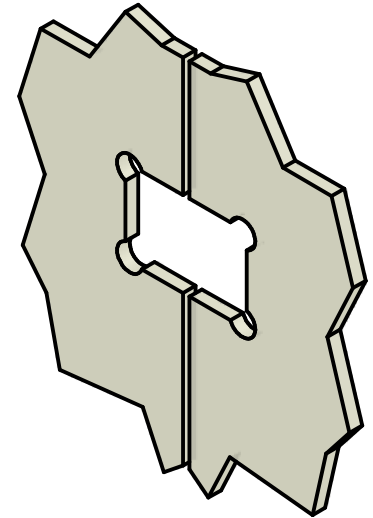
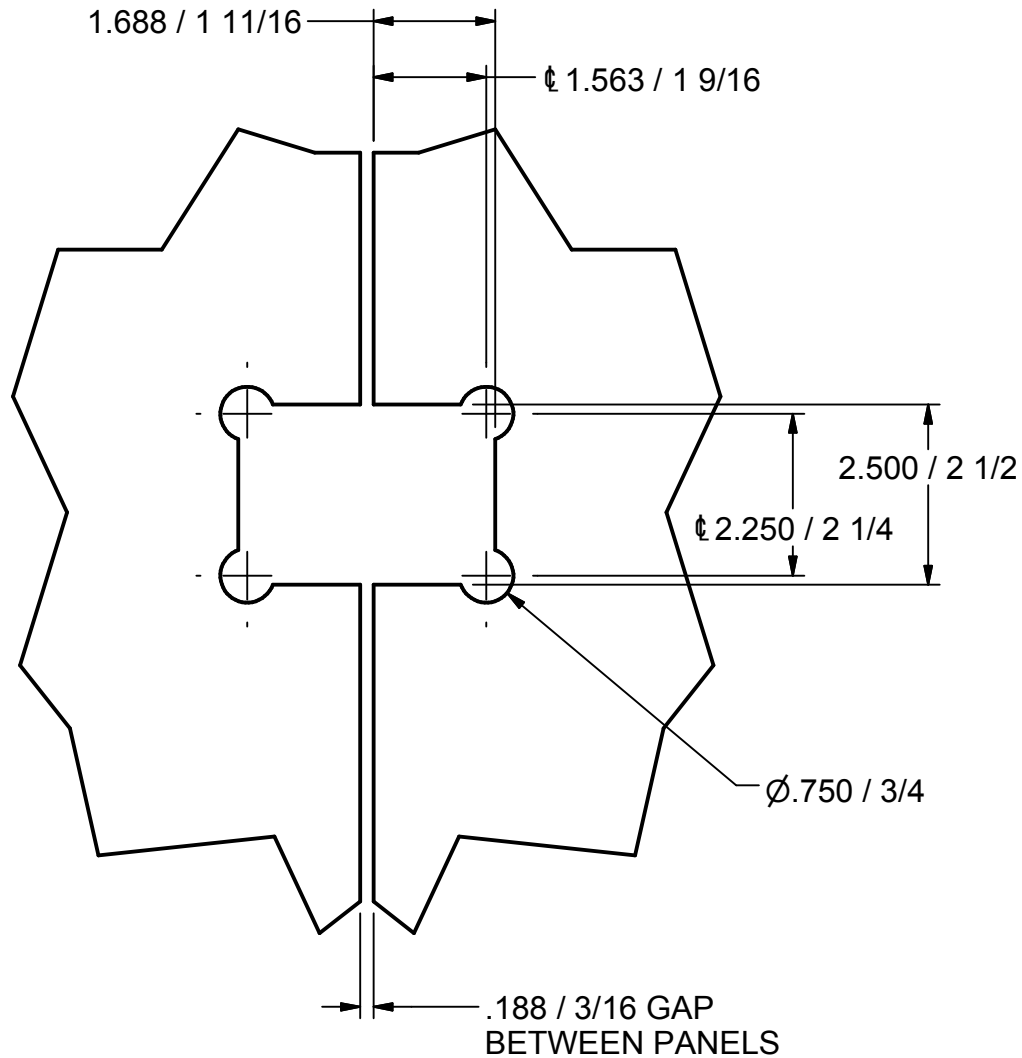


NOTE:
THIS NOTCH IS ALSO USED FOR:
GWH-1001
GWH-1002
GWOH-1000

Drawing Design And Other Disclosures Are The Property Of C.H.M.I. Unauthorized Use Manufacture Or Reproduction In Whole Or Part Is Prohibited	SHEET SIZE	A		CHMI Custom Hardware Manufacturing, Inc. Keokuk, IA 52632	
	GWH1000 Notch-3/16 gap				
DECIMAL .XXX ± .002 .XX ± .005 .X ± .01	DESCRIPTION (GLASS TO WALL HINGE) (TYPICAL NOTCH FOR EACH HINGE)				
FRACTIONAL ± 1/64	MATERIAL	DATE 6/18/2009	DRAWN Eaves		
ANGULAR ± 1'	SCALE	SHEET 1 OF 3	PART # GWH1000 Notch-3/16 gap		



Drawing Design And Other Disclosures Are The Property Of C.H.M.I. Unauthorized Use Manufacture Or Reproduction In Whole Or Part Is Prohibited	SHEET SIZE	A		
	CHMI Custom Hardware Manufacturing, Inc. Keokuk, IA 52632			
GGH1000 Notch				
DECIMAL .XXX ± .002 .XX ± .005 .X ± .01	DESCRIPTION (GLASS TO GLASS HINGE) (TYPICAL NOTCH FOR EACH HINGE)			
FRACTIONAL ± 1/64	MATERIAL	DATE 6/18/2009	DRAWN Eaves	
ANGULAR ± 1'	SCALE	SHEET 2 OF 3	PART # GGH1000 Notch	

